

**Paper Reference(s) 1SC0/2BH**  
**Pearson Edexcel Level 1/Level 2 GCSE (9–1)**

**Combined Science**  
**PAPER 4**  
**Higher Tier**

**Diagram Booklet**

## INSTRUCTIONS

**THIS DIAGRAM BOOKLET MUST NOT BE RETURNED WITH  
THE QUESTION PAPER AT THE END OF THE EXAMINATION.**

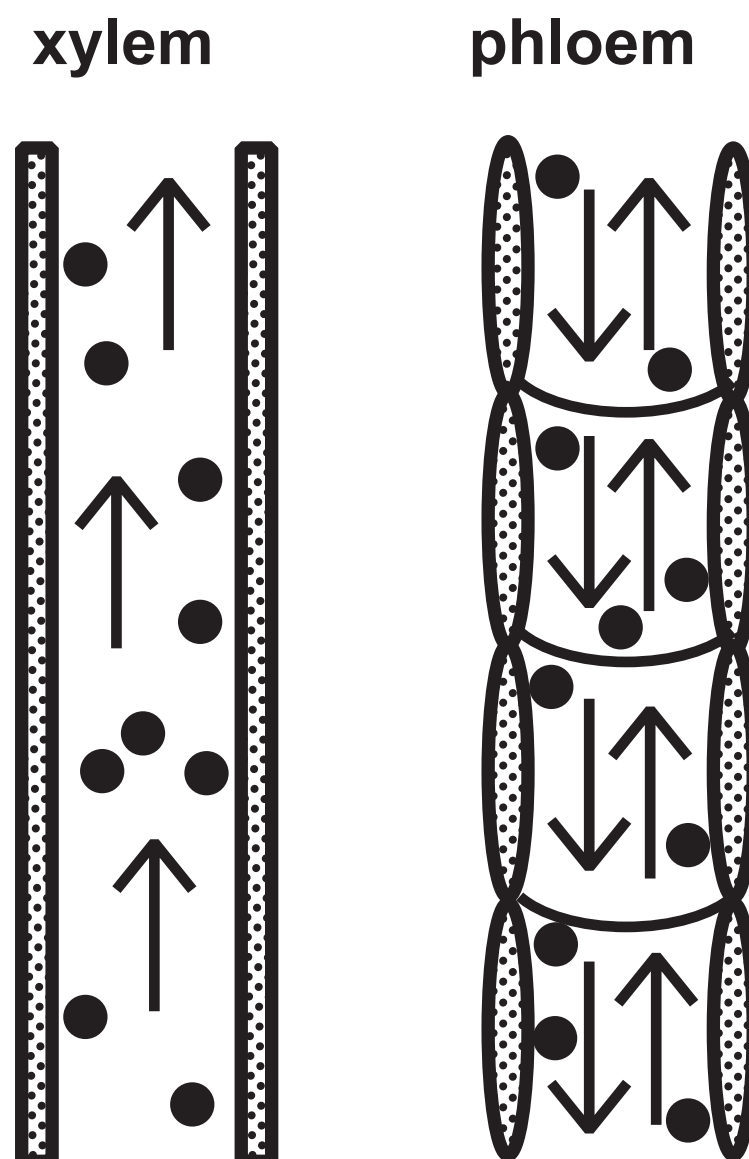
## Contents

### Page

|   |                    |
|---|--------------------|
| 4 | Question 1(a)      |
| 5 | Question 1(b)      |
| 6 | Question 2(a)      |
| 7 | Question 4(c)      |
| 8 | Question 5(a)(iii) |
| 9 | Question 6(a)      |

## Question 1(a)

Figure 1



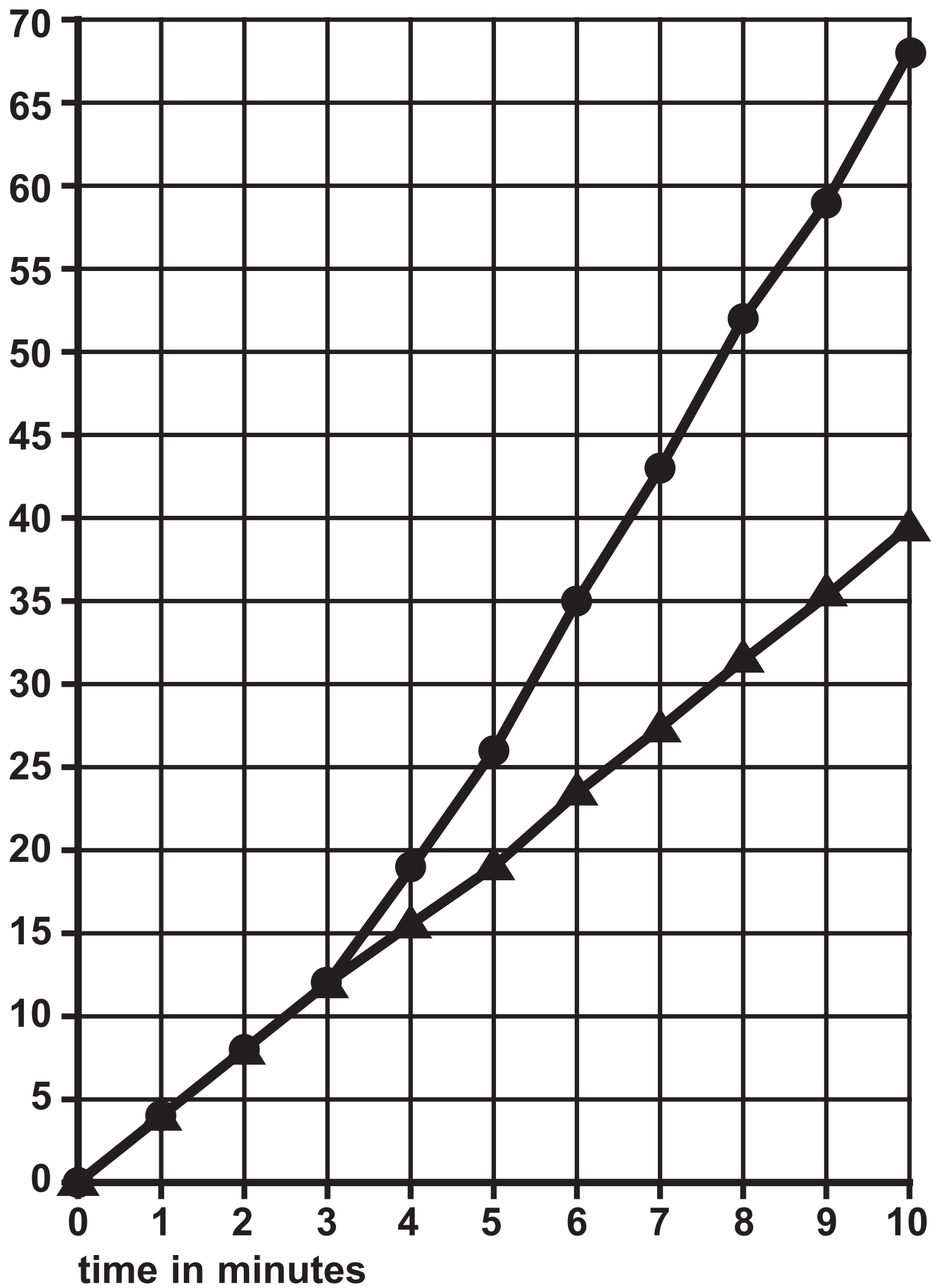
## Question 1(b)

Figure 2

—●— fan switched on after three minutes

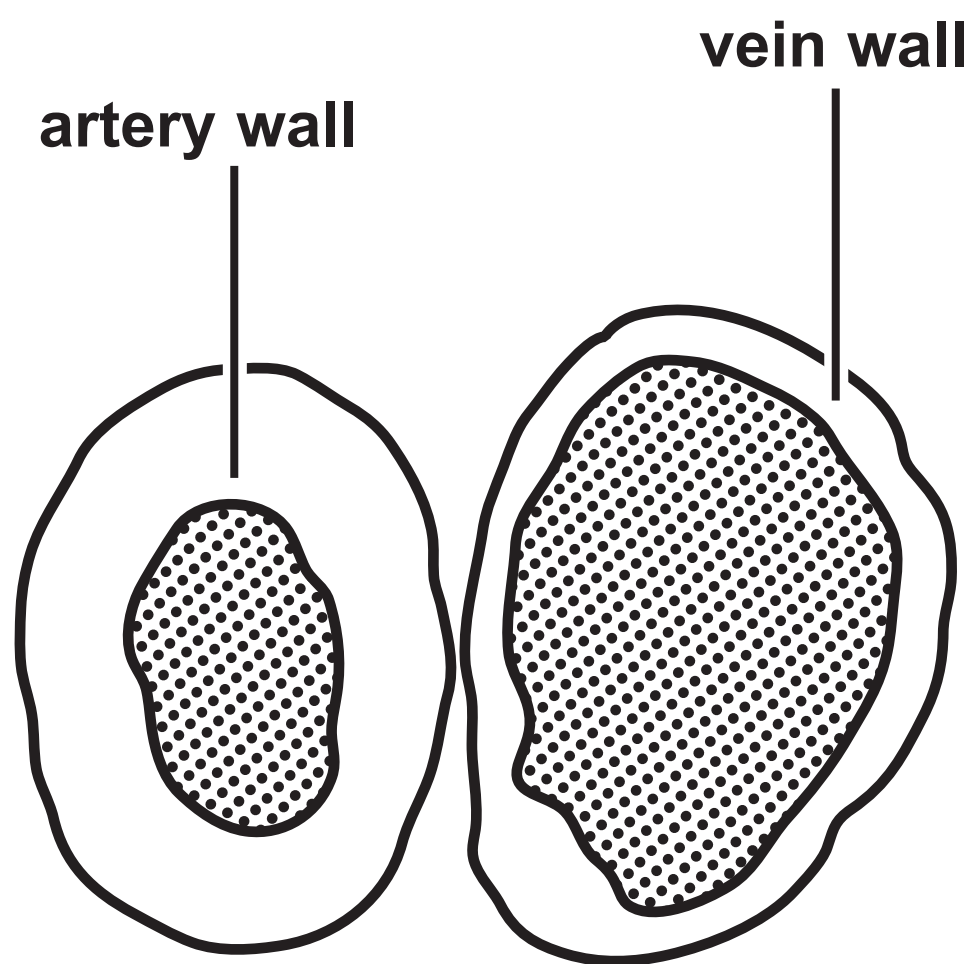
—▲— fan not switched on

volume of water  
taken up by the plant



## Question 2(a)

Figure 3



## Question 4(c)

Figure 6

| blood test           | woman's result                   | normal range                            |
|----------------------|----------------------------------|---|
| TSH level            | 5.6 mU/l                         | 0.4 to 4.9 mU/l                         |
| thyroxine level      | 27.5 pmol/l                      | 9.0 to 21.0 pmol/l                      |
| red blood cell count | $5.2 \times 10^6$ cells/ $\mu$ l | 4.2 to $5.4 \times 10^6$ cells/ $\mu$ l |
| glucose level        | 82.0 mg/dl                       | 72.0 to 99.0 mg/dl                      |

Question 5(a)(iii)

Figure 8

| type of exercise | heart rate in bpm |           |            |            |            |
|------------------|-------------------|-----------|------------|------------|------------|
|                  | 0 minutes         | 5 minutes | 10 minutes | 15 minutes | 20 minutes |
| running          | 90                | 156       | 168        | 180        | 180        |
| walking          | 90                | 96        | 90         | 96         | 90         |



Question 6(a)

Figure 9

| month | number marked<br>in the first sample | size of the<br>second sample | number of<br>recaptured animals | population<br>size |
|-------|--------------------------------------|------------------------------|---------------------------------|--------------------|
| March | 18                                   | 22                           | 8                               | 50                 |
| July  | 12                                   | 18                           | 10                              |                    |

**Question 2(a)**

**(Source adapted from: © The University of Kansas Medical Center)**